

VIKING

Blast & Wash Systems



**FOUNDRY & FORGING
AIRLESS SHOT BLAST &
PARTS WASHING EQUIPMENT**



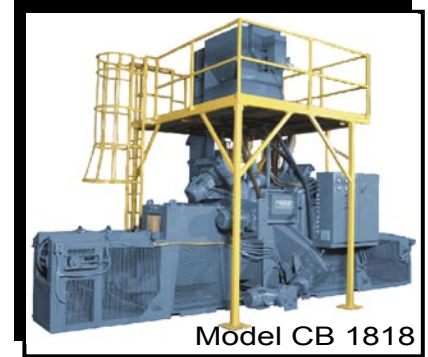
CHAINBELT FLOW THROUGH BLASTERS



Model
CB 3624
Shown

Features:

- This type of system offers the potential for reducing blaster operation and maintenance cost per cleaned part by 20 to 50% compared to batch-style blast cleaning
- Pass-through blasting should also reduce labor costs associated with cleaning by 50 to 90%
- Utilizes 4, 6, or 8 model VK PowerMax, direct drive blast wheels for complete 360° part coverage
- Complete cast chrome/moly lining protects the cabinet from abrasive wear for long life and low maintenance
- Manganese belt conveyance system with variable speed drive accommodates from 1 to 60 feet per minute blasting speeds
- A wide range of cabinet opening configurations provide for blasting many different sized castings or forgings with a weight capacity of approximately 60 lbs



Model CB 1818

When blast cleaning small or intricate castings and forgings that cannot withstand tumbling, a chainbelt system can process parts quickly with minimum trauma. Pass-through blast cleaning systems are also easily customized to suit foundry and forging specific product menus and space availability.

SKEW ROLL FLOW THROUGH BLASTERS

Features:

- 4 standard sizes available capable of cleaning cylinders ranging in size from fractional diameter up to 30" in diameter. Custom engineering available to accommodate larger diameters
- Utilizes VK PowerMax direct drive blast wheels in various configurations depending on work
- Variable speed conveyors allows for slow to fast processing speeds suitable for your specific application
- The abrasive conveyance and airwash separation systems recycle abrasive to an overhead hopper for a continuous supply of clean abrasive
- Cleans to a SSPC-6 surface finish on a continuous flow basis
- Vestibules and seal systems have been specifically designed to reduce carry out and abrasive loss
- Rugged and durable construction with 1/2" thick cast chrome/moly lining protects the blast cabinet from wear



Model SR 12 Shown

The SR Series is ideal for high speed cleaning of cast pipe and other cylinder castings and parts. The skew roll conveyor system handles the pipe or cylinder through the blast chamber on cast chrome "V" groove rollers for 360-degree cleaning of exterior diameter

VIBRATORY SHAKERS



Model
54S Shown

Vibratory cleaning is the most economical method of batch processing small quantities of parts. Tumbling parts in ceramic or aluminum media is gentle enough to protect delicate parts, however is tough enough to deburr and polish. Standard sizes range from 2 to 54 cubic foot capacities.

Features:

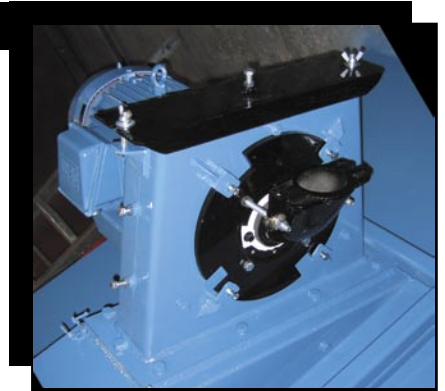
- Soft rubber pads keep the shaker from walking, reducing noise and eliminating the need to bolt the machine to the floor
- Vibratory tub is lined with 1/2" thick urethane body liner and a 3/8" thick manganese end liners ensuring long life
- Totally enclosed shaker tub frame and steel lid of 7 Ga. steel
- Solvent reservoir
- 0-30 minute cycle timer
- 5 stage solution separation system

BLAST WHEEL RETROFITS

The VK PowerMax Series of center-fed, direct drive blast wheels are an economical option for upgrading or retrofitting all brands of blast equipment. The blast wheels ship complete and assembled, factory pre-tested and ready for installation. Custom conversion kits are available.

VK PowerMax Blast Wheels Feature

- Long wearing cast chrome/moly alloy with 1" thick cast liners
- Fewer replacement parts for reduced operating costs
- Parts weighed and balanced for precision
- More horsepower transfer to the blade tip for more abrasive thrown per HP



PASS THROUGH WASHERS

Available in chainbelt, monorail, and roller table styles, these washers provide heavy-duty, production line cleaning.

Features:

- Automatic steam exhaust blower
- Equipped with double neoprene curtains that seal the chamber
- 7-day timer for heating the system
- Insulated cabinets for energy efficient and quiet operation



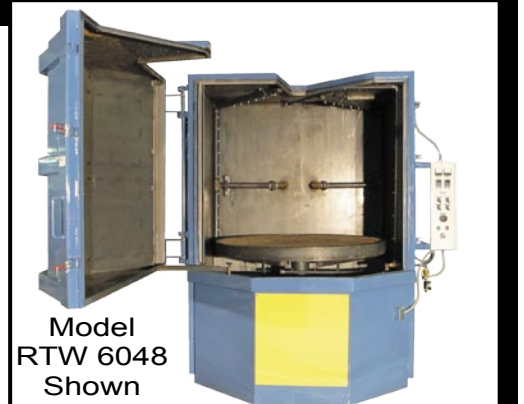
Model CBW 3636

ROTARY SPRAY WASHERS

With front or top loading styles available in 11 different models ranging in pump horsepower from 3 to 20, Viking rotary washers are a combination of high impact cleaning power with all the features you want at an affordable price.

Standard Features:

- Pumps do not have bearings, seals or gaskets to replace
- Safety interlock to prevent pump operation with the wash cabinet door open
- Thermostat and thermocouple to monitor and maintain reservoir fluid temperature
- Complete fluid reservation insulation
- 2-inch diameter drain plug
- 0-60 minute wash cycle timer
- Low water, high temperature fail switch to shut gas burner off.



Model
RTW 6048
Shown

TUMBLE BELT BLASTERS

Viking Steel Belt Blasters are ideal for blasting hot castings or forgings that can be tumbled. These machines can process much heavier parts than the Rubber Belt Style. Available in standard 7 and 14 cubic foot capacities, with custom sizing available to fit specific applications.

Features:

- Heavy duty replacement manganese slats bolt to heavy duty cast chrome link chain.
- Fully adjustable lip type airwash separator ensures optimal abrasive cleaning

Model
700S
Shown



Model
600
Shown



- Pneumatic blast cabinet door
- High velocity center-fed blast wheels
- 5-30 HP blast wheel configurations
- Cast chrome drum heads

Viking's Rubber Belt Tumble Blasters are ideal for high speed processing of parts that can be gently tumbled in the blast mill's rubber cavity.

Optional Features:

- Scalp drum available for separating slag, flashing and other large contaminants
- Cast chrome drum heads

TABLE BLASTERS

Viking's Table Blast models are the ideal choice for cleaning a wide variety of castings or forgings that are not suitable for tumbling due to size and shape. Parts are rotated on the table and are cleaned by exposure to the abrasive blast.

Features:

- Available in 36, 48, 60, 72 and 96-inch diameter capacities with custom sizes available to fit specific applications
- Wrap around door allows easy access for loading & unloading parts
- Table is lined with a self-draining 3/8" thick manganese alloy plate
- Safety interlock to prevent opening of the blast cabinet door during operation, protecting the operator from harm.
- Fully adjustable lip type airwash separator ensures optimal abrasive cleaning.
- 5-30 HP blast wheel configurations

Swing Table Style Blasters are also available that have the blast table attached to the door. When the door is opened, the worktable swings completely clear of the cabinet, offering easy loading and unloading.

Model 7260T
Shown



Model
48-ST
Shown



Optional Features:

- Rotary scalp drum
- Dust collection system
- Auxiliary abrasive hopper and low level sensor

INDEXING SPINNER HANGERS

Model
SH1545
Shown



Features:

- Cast lined blast chambers
- Custom casting or forging fixture designs
- Heavy duty abrasive recycling system
- Manganese wheel housing and cast chrome liners providing long wear life
- Light curtain protection for operator safety
- Easy access doors provided where maintenance is required
- Available in 5 to 40 HP wheel configurations
- Heavy duty cabinet and auger system construction



Model
SH 2560
Shown

Optional Features:

- Multiple zone blasting
- Rotary scalp drum
- Continuous duty, cartridge type dust collector
- Auxiliary abrasive hopper and low level sensor

Viking airless, spinner hangers are rugged, long lasting, industrial equipment that provide versatility in blasting a wide range of part sizes and shapes.

MONORAIL FLOW THROUGH BLASTER

If your facility already utilizes an overhead monorail system, Viking offers Airless Shot Blast machinery for handling castings designed to integrate into your existing material handling system.



Features:

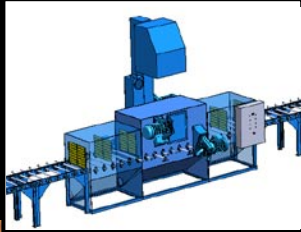
- Cost effective method for cleaning a wide variety of part sizes and materials
- Slow to fast processing speeds suitable for your specific application
- The abrasive conveyance system and airwash separation systems recycles abrasive to an overhead hopper for a continuous supply of clean abrasive
- Utilizes 4, 6, or 8 model VK PowerMax direct drive blast wheels for complete 360° part coverage
- Vestibules and seal systems have been specially designed to reduce carry out and abrasive loss
- Monorail conveyance system with variable speed drive accommodates from 1 to 60 feet per minute blasting speeds
- Heavy duty, internal, replaceable cabinet liners protect the cabinet from direct abrasive wear
- 90-Degree turn vestibules available for improved shot containment



Model MR 7236
Shown

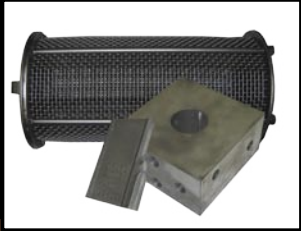
VIKING

Blast & Wash Systems



CUSTOMIZATION

It is in the customization of our basic designs to your castings specific needs that truly sets Viking apart from the competition. With an accomplished and proven design staff, Viking can build equipment from the ground up or simply modify existing models to tailor fit your cleaning application. At Viking we do not simply match your casting to the closest machine size that will work. We match our blast equipment to your part, to provide the most efficient and economical cleaning solution possible.



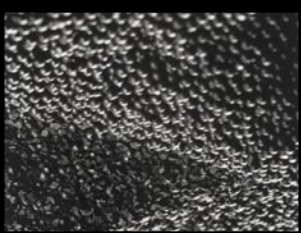
REPLACEMENT PARTS

Superior parts and service sets Viking's Parts Department apart from the rest. We carry everything from blast blades to electrical components - even replacement parts to our competitors' equipment.



MACHINE REBUILDING SERVICES

Have an older shot blast system that is not running like it used to? Viking rebuild services are a cost effective way to bring life back to older equipment. We will rebuild Viking equipment or competitor machines. Please call for pricing.



PREMIUM QUALITY ABRASIVES

Only the highest quality abrasives will give you the highest quality finish. Viking can supply you with the finest steel shot or grit in any size.

VIKING BLAST & WASH SYSTEMS

3810 N Toben
Wichita, KS 67226
Phone: 316-634-6699
Toll Free: 800-835-1096
Fax: 316-634-6658
Web: www.vikingcorporation.com
Email: sales@vikingcorporation.com

